

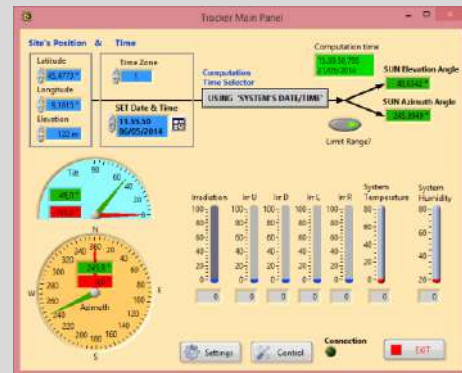


SOLAR POSITION TRACKING SYSTEM



DL SUN-TRACKER (bench not included)

For the study of the operation of a solar panel that follows the sun light direction thanks to a motor system.



Complete with connecting cables, experiment manual and **software for control and data acquisition**.

TRAINING OBJECTIVES

With the trainer, it is possible to monitor the most meaningful parameters of the sun tracker and to compare them with the expected optimal setting according to the actual sun position.

Average training hours: 3h approx.
Approx. packing dimensions: 0.50 x 1.05 x 0.90 m.
Net weight: 32 kg.

TECHNICAL SPECIFICATIONS

The trainer is composed of the following:

- A two-axis solar tracking system, 2 x 20W, 12V, to allow the tracking of the sun light direction.
- A supporting frame for the modules.
- A battery.
- A battery charge regulator, 12V, 30A.
- A circuit breaker.
- A load module. It includes two 12V lamps, dichroic 20W and LED 3W, with independent switches.

OTHER FEATURES:

- Automatic or manual tracking.
- Temperature sensor.
- Humidity sensor
- Compass sensor.
- Protection against gust.
- RS485 Modbus RTU communication.